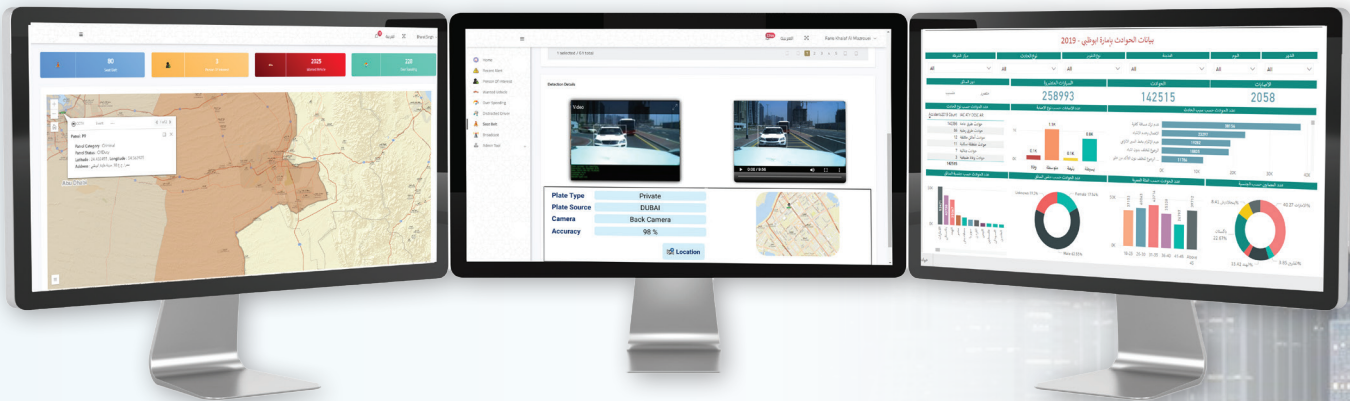


Command and Control Application

Remotely provides the operator from the Command and Control Center with a wide range of functions embedded into a platform designed to ensure the smooth flow and management of surveillance and crime detection operations.



- Central Dashboard
- Patrol's KPIs Monitoring and Control
- Access to Issued Violations with GIS based heatmaps
- Real-Time Insights into Patrol's Activities
- In-Vehicle Health Check and Monitoring
- Comprehensive Search with various filters and sorting features
- Instant Alerts from in-vehicle System
- Audit Trails Records and Logs
- Data and video archives with search capabilities
- Broadcast Messaging to in-vehicle System
- Integration-Ready with legacy systems



P.O. Box 45021, Office M03
Building C29, Khalifa Park
Abu Dhabi, UAE
Tel: +971 2 441 5551

Office 403, Building 4,
Emaar Business Park, Plot 11
Dubai, UAE
Fax: +971 2 441 5552

www.tatweermee.com
[@tatweermee](https://twitter.com/tatweermee)
f t i n o



TATWEER Smart Patrol

Tatweer Smart Patrol System (TSP) is an integrated solution customized to assist and enhance surveillance, law enforcement and crime prevention efforts. TSP system is integrated with top-notch Automatic Number Plate Recognition cameras, Seatbelt violation and Distracted driver detection, 360 degrees surveillance, Facial recognition, Speed detection, Law enforcement innovative mobile App and web application which together, build the complete ecosystem. TSP is integration-ready with existing systems and can be easily customized, and expanded with additional features / modules.



TATWEER SMART PATROL

In-Vehicle System

A comprehensive structure of cutting-edge sub-systems available to the officers in the patrols through a feature-rich touchscreen interface. System provides various functionalities including

Speed Enforcement

360 Laser beams used for detecting, classifying, and tracking vehicles around the patrol. Timely triggering of the ANPR camera with accurate detection during the movement or stationary mode.

Facial Recognition

Real-time, high-accuracy, simultaneous multiple face detection & recognition to identify wanted person near the patrols.

Emergency Event System

Monitor and record all emergency events through in-vehicle system once a Panic State is activated by turning on the lightbar or by pressing the emergency button.

Mobile ANPR

Accurate readings for up to 5 concurrent lanes in various light conditions (Day & Night). System uses the ANPR data to identify flagged vehicles and truck permissions and expired license plates. The OCR engine supports wide range of international plate number (eg: Arabic numeric).

Health Check & Audit Logs

Monitor the status of the system components. Monitor all officers' activities and actions on the generated alerts and violations through both command and control system and the in-vehicle System.

360-degree Video and Audio Surveillance

Ultra-wide-angle surveillance up to 360 degrees around the patrols with full HD of live streaming and recording with playback features.

Seatbelt violation and Distracted driver detection

A high-resolution camera that accurately detects drivers with no seat belts or distracted drivers (e.g. Drivers using Mobile Phones) using state-of-the-art deep neural network architectures for action spotting and sequence classification.

Violation and Alerts Records Management

All violations and alerts are automatically detected from the cameras or the system in the patrol and it will be reflected in the real time dashboard

Suspected vehicle

Law Enforcement Officer, through the In-Vehicle system, can add / mark a vehicle as a Suspected one and request in the central office system to consider that particular vehicle as a Wanted vehicle based on its record or actions.

Live Tracking

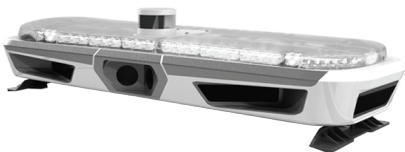
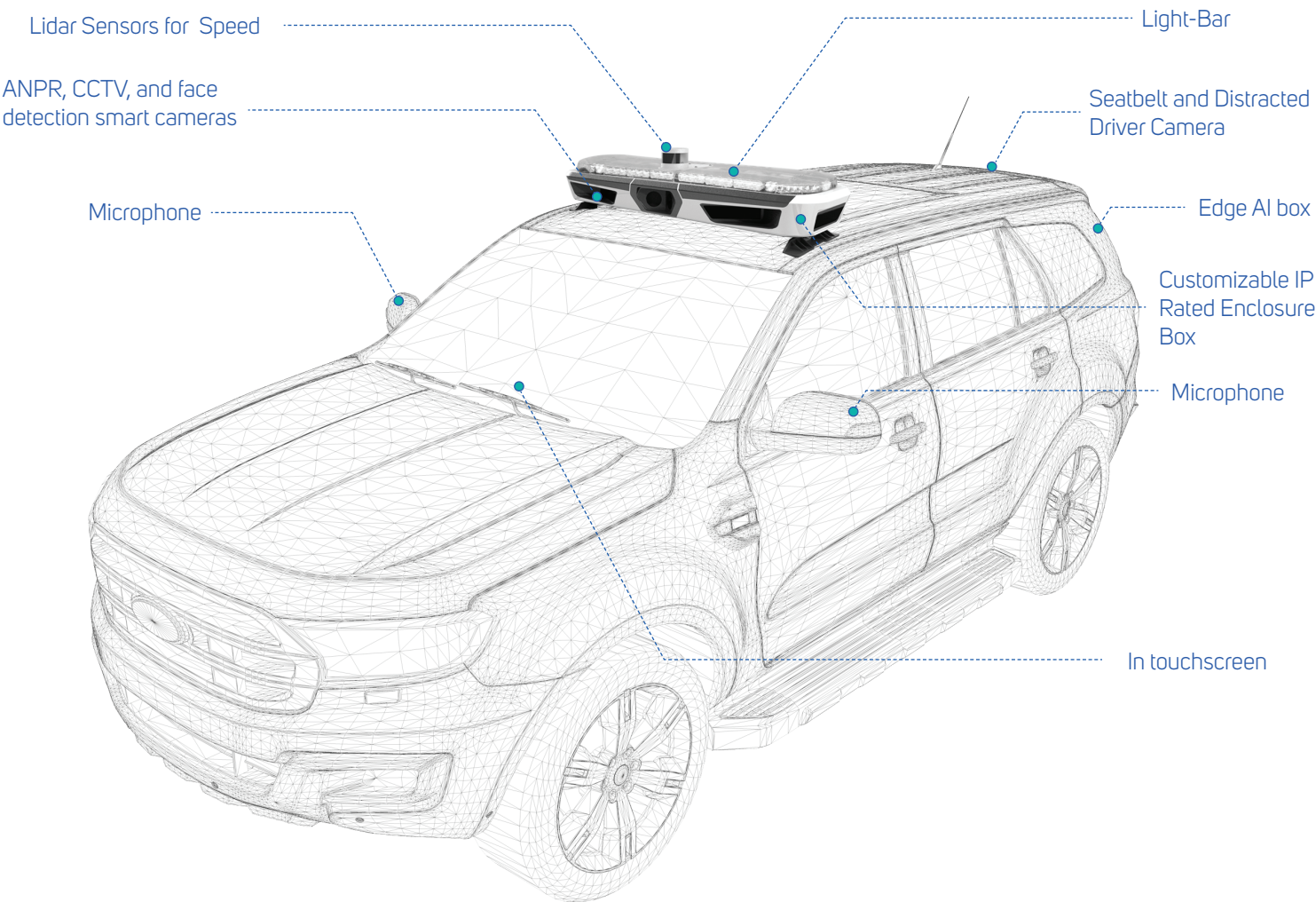
Live GIS based visualization of patrol location available in the in-vehicle system, and live locations will be sent to the Command and Control Application.

Realtime Dashboard

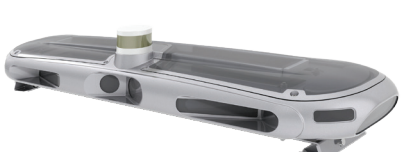
Comprehensive dashboard with real time information from Alerts, Violations, Command and control system messages and system health status.

Multi-User Access

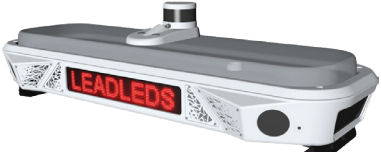
Multi officers can access the In-Vehicle System session at the same time with option to select the primary officer on the patrol. All actions on the alerts and violations will be logged for that primary officer user.



Model No: TIEL20EP-S



Model No: TIEL20EP-I



Model No: TIEL20EP-V